

Mendel  
University  
in Brno



20.4.2016, Rivers 2015, Brno

Prepared by:

Prof. MVDr. Ivo Pavlik, CSc.

# Mendel University in Brno

Mendel University in Brno



1919



celebrates



95<sup>th</sup>

anniversary

2014



## Mendel University in Brno

- Founded in 1919 as the University of Agriculture in Brno
- The oldest independent University of its kind in the Czech Republic
- Since 1994 the University has borne the name of the famous genetics expert Gregor Johan Mendel
- 5 faculties and 1 institute
- Approximately 11,000 students



## Faculty of Agronomy

- Established in 1919
- One of the leading educational institutions in the sphere of agricultural science in the area of crop production, animal breeding, food production and quality, agroecology, renewable energy resources etc. in the Czech rep.
- 14 departments
- ca. 2,300 students



# Faculty of Agronomy



- **ca. 2,500 students (Bc., MSc., Ph.D.)**
- **ca. 400 employees**
- **ca. 150 teachers**

## Scientific and research activities

- Grants (grant agencies, ministry funds, international projects ...)
- Excellent science teams (chemistry, nanotechnology, climatology, ...)
- CEITEC - Central European Institute of Technology

# University Farm in Žabčice – field trials



## University Farm in Žabčice – animal production



Faculty of Agronomy - Facilities for education, research and cooperation

## Testing laboratory for motor vehicles





# Centre for Innovative Use and Strengthening of Competitiveness of Czech Brewery Raw Materials and Products



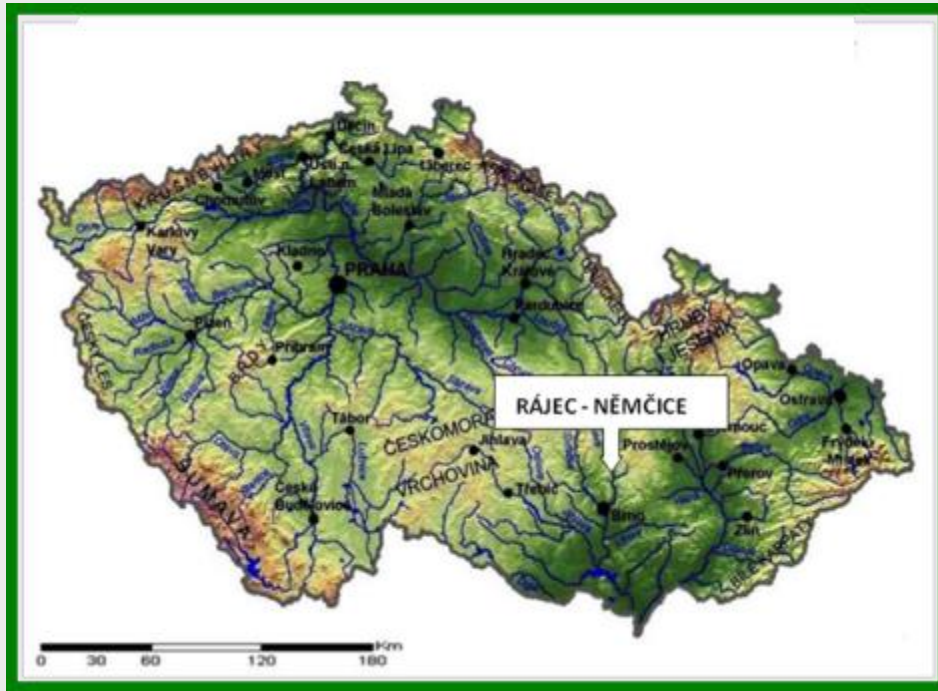
## Faculty of Forestry and Wood Technology



- Established in 1919
- Prepares students for their roles as experts in a broad range of professions, especially in the sector of landscape management, forestry, and wood science and technology
- 13 departments
- ca. 1,900 students



# Faculty of Forestry and Wood Technology – Ecosystem station of Rájec



*Description of the Ecosystem Station of Rájec (the Dražanská vrchovina Highland)*

**Geographic coordinates**

**49°29' N, 16°43' E**

**Altitude**

**610 – 625 m**

**Geological subsoil**

**acid granodiorit**

**Soil type**

**cambisol modal oligotrophic**

**Mean annual air temperature**

**6.5 °C**

**Mean annual sum of precipitation**

**717 mm**

## Faculty of Horticulture

- Established in 1985 as a separate faculty of Mendel University, located in Lednice
- Lednice is a part of “Lednice-Valtice Area”, listed by UNESCO as a world heritage site
- Specially equipped facilities: cellars, glasshouses, laboratories etc.
- 10 departments
- ca. 1,400 students





Mendeleum

Green house

Block A

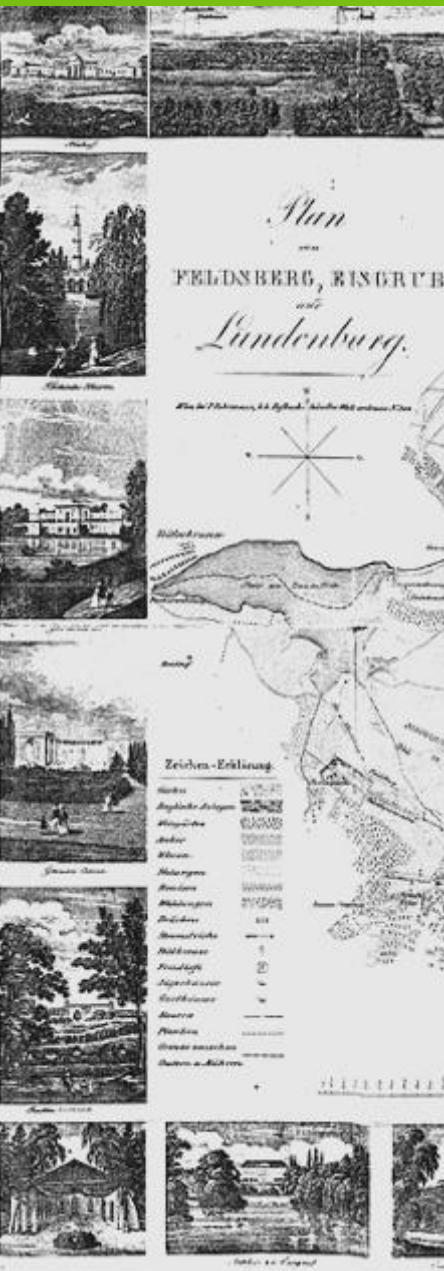
Block C

Students'  
dormitories

Block D

Block B

## Surrounded by beautiful landscape of Lednice – Valtice Area



# Faculty of Horticulture



## Faculty of Business and Economics



Faculty  
of Business  
and Economics

Mendel  
University  
in Brno





# Faculty of Business and Economics

- Member of the European Council for Business Education
- Established in 1959 as the oldest faculty of economics in Moravia
- A modern building (Building of the year 2005)
- Computer labs (Laboratory of Network Technology; Virtual Reality Laboratory, Eye-tracking laboratory)
- 10 departments,
- more than 3.5 thousands students at the bachelor, master and doctoral level



## Research and Educational Laboratories

- Hydraulic and Pneumatic Systems Laboratory
- Laboratory of Information Processing
- Laboratory of Intelligent Systems
- Networked Systems Laboratory
- Virtual Reality Laboratory
- Eye-tracking Laboratory



## Institute of Lifelong Learning



## Bachelor's degree program:

- Pedagogical Specialization
  - Teaching of Vocational Subjects
  - Practical Subjects and Vocational Training
- Technical Expertise and Insurance

## Master's degree program:

- Technical Expertise and Expert Engineering



## Continuing Education courses



## Consulting Center

### **For students and new graduates**

- psychological consulting,
- psychotherapy,
- coaching,
- consulting for students in different ways disadvantaged,
- career consulting,
- courses about current situation at the labour market,
- training courses and soft skills



## University of the Third Age

### Education



### Excursion



# University Training Forest Enterprise in Křtiny

- special-purpose facility, which serves the University as a background for demonstration, training and research
- over 10,000 hectares of forestland
- large part of the forest is considered to be a landscape-protected area subject to special methods of forest stand management
- mechanized silvicultural harvesting, a modern sawmill
- 18 nature reserves on an area of 820 ha, with four having the status of a national parks





# University Agricultural Enterprise in Žabčice

- Enterprise in Žabčice is the oldest enterprise of its kind in the Czech Republic
- In 1925 as a demonstration farm of the University
- During years it was fused with University Enterprise in Lednice
- Nowadays it serves as a background for demonstration, training, research, diploma and doctoral thesis for both students and teachers. It is also open to a public for excursions, presentations or further education.



## Botanical Garden and Arboretum

- The Garden was established by prof. Bayer in 1938
- 11 hectares garden is dated since 1967
- Orchid collection with more than 1,500 natural species and 3,000 hybrids, 500 alpine plants, 2,000 perennials and 4,000 woody plants in the outdoor area



## Accommodation facilities

- 4 halls consist of 10 independent buildings with ca. 3,000 beds altogether (Jan Amos Comenius Hall, Joseph Taufer Hall, Academy Hall and Hall in Lednice)
- Five catering centres
- Centre for sport activities



# Faculty of Regional Development and International Studies (FRDIS)

- Established in **2008**
- The **5<sup>th</sup>** faculty of Mendel University
- **8** departments
- ca. **1,300** students
- **16** subjects taught by foreign professors
- **9** foreign professors



# Faculty of Regional Development and International Studies (FRDIS)

- Professional placements **in developing countries** up to **50** students per year
- **200** companies and organisations offer professional placements in the business as well as public sector
- Unemployment rate only **1.4 %**



## Study Programmes

FRRMS currently offers the study in eight study programmes with appropriate study fields in bachelor and master degree.

<b>BSc.</b>	<b>MSc.</b>
<b>Regional Development</b> (in Czech)	<b>Regional Development</b> (in Czech)
<b>Regional Development</b> (in English)	<b>Regional Development</b> (in English)
<b>International Development Studies</b> (in Czech)	<b>International Territorial Studies</b> (in Czech)
<b>International Development Studies</b> (in English)	<b>International Territorial Studies</b> (in English)

## Acclaimed Guest Foreign Lecturers

Our students can choose to study either in Czech or English, so the corridors of the Faculty are naturally packed with foreign students and teachers (9 from various countries around the world).



## Open to International Students

FRDIS is ECTS-compliant and recognized as an institution providing quality education.

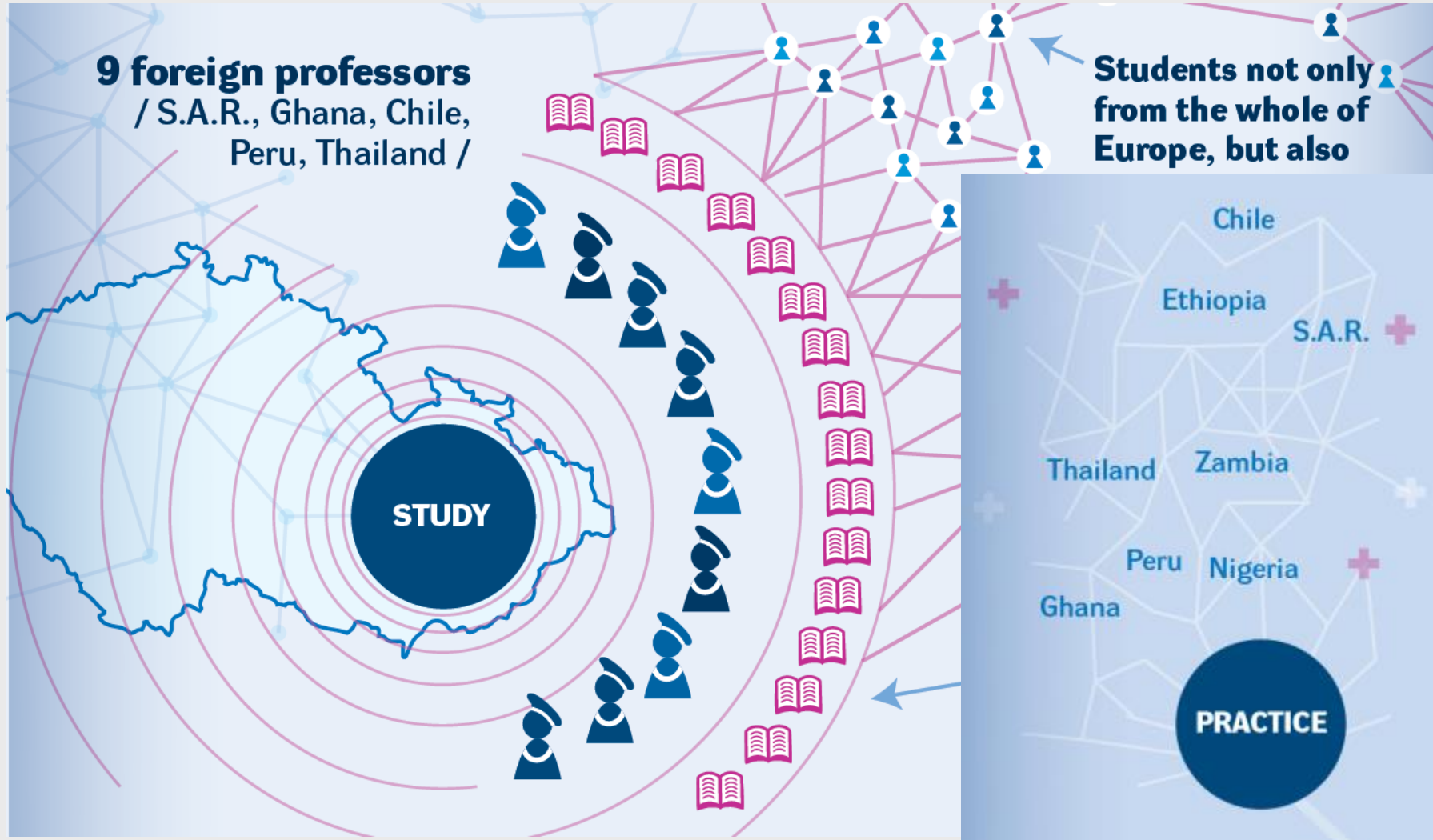
Our students can complete any part of their studies abroad if they decide to broaden their horizons in this way.

The results such students achieve abroad are fully transferred and accepted by our faculty upon their return.





# Study at the faculty of international character



## A Wide Range of International Stays

The Faculty seeks to make its study programmes as internationalised as possible, making them highly attractive and practical both nationally and internationally.



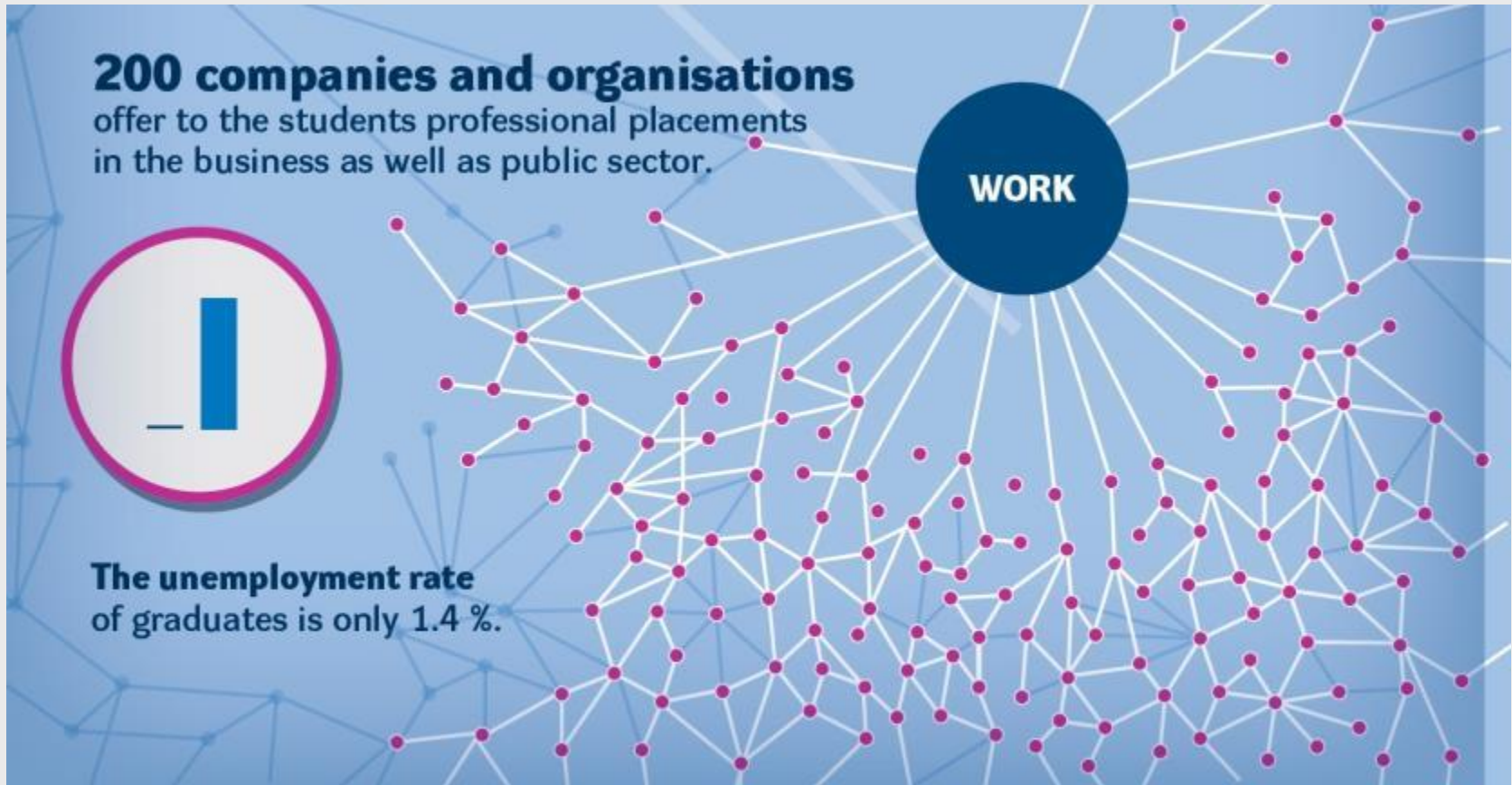
## Quality Education

Students are trained to be sensitive not only to the economic position and social cohesion within the individual EU countries, but also to the position of the European continent on the world stage in general.



## Excellent Employability of Graduates

Our students acquire a wide range of practical skills that are essential and advantageous in their further employment, professional growth, and career development. Our graduates are highly demanded and competitive across the job market.



Mendel  
University  
in Brno



Thank you for your attention!

