

HOW CAN WE DEFINE FOREST FUNCTIONS AND SUSTAINABLE FOREST MANAGEMENT IN THE CASE OF TUSHETI REGION OF GEORGIA?



CZECH REPUBLIC
DEVELOPMENT COOPERATION

Kateřina Holuřová & Otakar Holuša

Georgia and Tusheti region

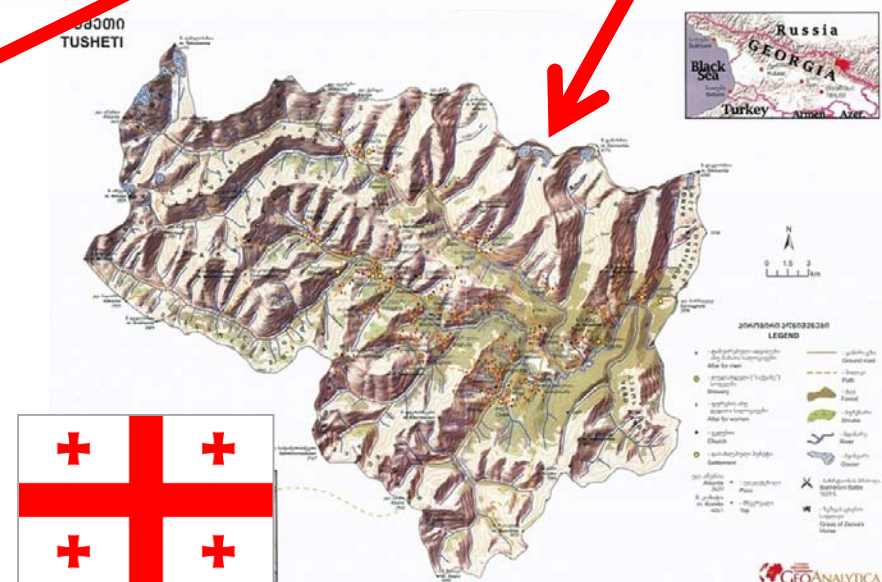
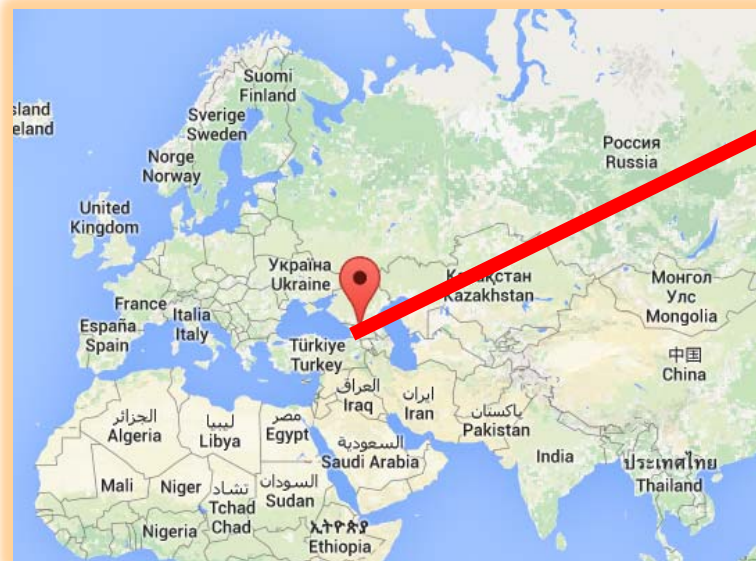
Total area 69,420 km²

Population: 3,729,500

Official language

Georgian

Forests cover
about 48%.



Tusheti region

- is located within the eastern part of the Caucasus Mountains, bordering on Dagestan, Chechnya.
- is the most **ancient highland region** and has preserved rich traditions of the **old oriental pastoral culture**.
- **represents the central part of the Caucasus Range, including a system of high mountains, varying from 1 500 to 4 500 metres above sea level.**



Tusheti landscape

□ very **steep slopes**, brooks, streams and alluvium, steep ravines;

Tusheti landscape

□ mixed and **coniferous forests**, montane meadows, subalpine shrubs, subalpine and alpine grasslands and subnival areas;



Tusheti landscape

□ mixed and **coniferous forests**, montane meadows, subalpine shrubs, subalpine and alpine grasslands and subnival areas;



Tusheti landscape

❑ traditional villages on the slopes, inaccessible landscape without electrification.

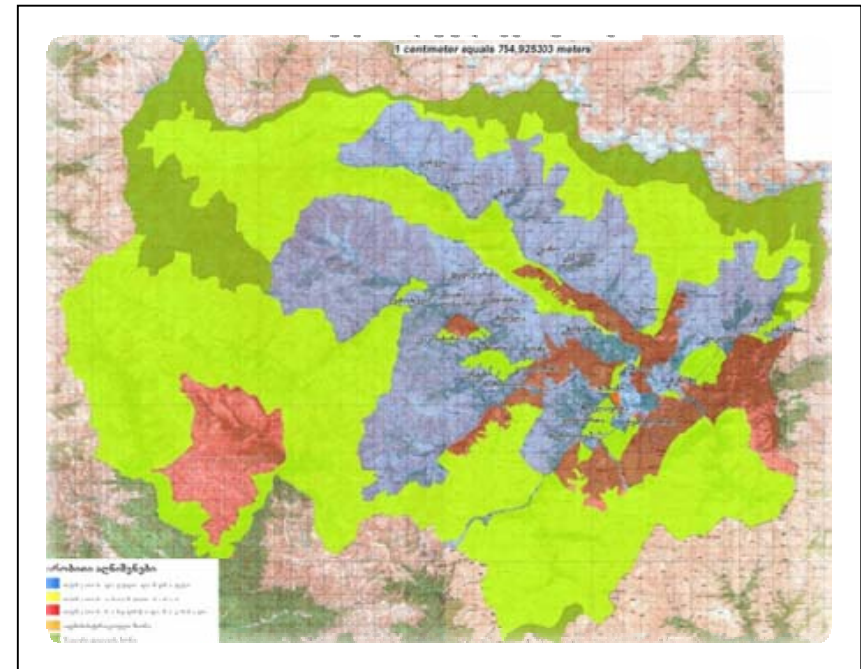


Tusheti landscape

❑ traditional villages on the slopes, inaccessible landscape without electrification.

Tusheti protected areas

- Tusheti Protected Areas surface approximately 32,000 ha
- There are several protected areas in the region of Tusheti (National Park, Strict Nature Reserve - IUCN and Protected Landscape Area).
- There was a Czech project aimed at the creation of **management plans** in the territory.
- Thanks to the management plan has been created the various **zones of protected areas**.

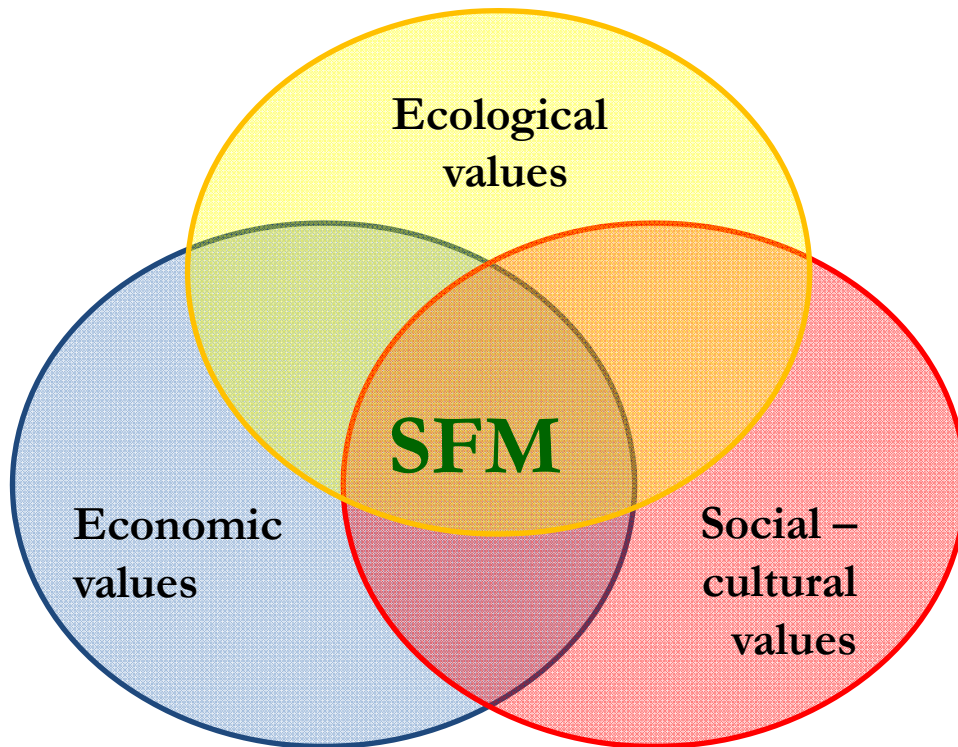


State of the areas

- forest areas have not been precisely defined - **the characterization of natural conditions does not exist;**
- definitions of quantitative and qualitative characteristics of non/wood-producing resources and **forest functions do not exist;**
- the health condition of forest ecosystems is not assessed; methodological procedures and necessary care for the damaged forest ecosystems;
- requirements of local communities for using the forest ecosystems are not respected;
- indicators of timber volume in the given area are not **defined** (annual increment, timber supply, timber use possibilities, logging limits, regeneration possibilities etc.); ...

Are Tusheti PAs working on the basis of sustainable development?

- the principles of SD are always on the same level (in the same plane, equally important)

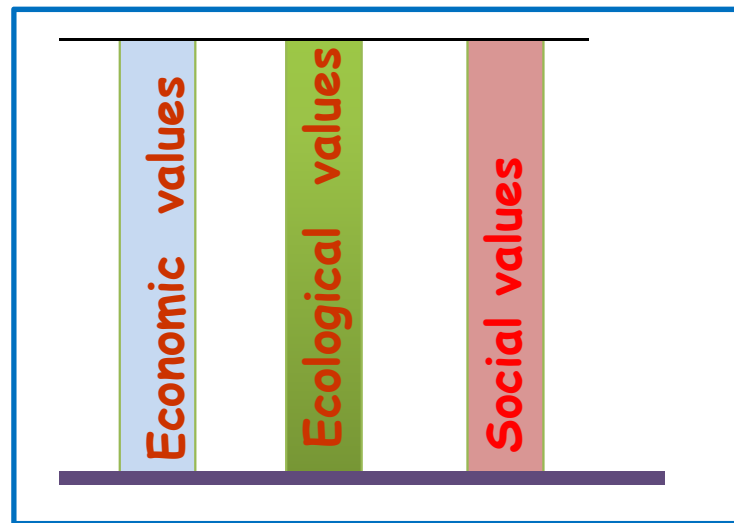


- a high degree of nature conservation importance of causes

depopulation of the countryside, the landscape inability to inhibit and live here !!!

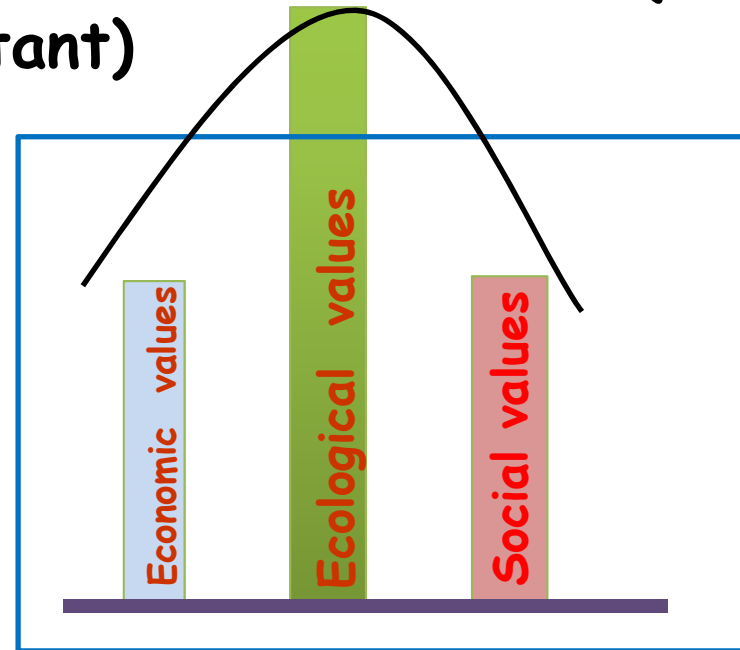
Are Tusheti PAs working on the basis of sustainable development?

- the principles of SD are always on the same level (in the same plane, equally important)



properly functioning
system

X



improperly functioning
system

Traditional land use in Tusheti

- grazing sheep and horses
- traditional agriculture and the use of wood - the need for wood for fuel, construction of houses, etc.



The current state for wood using?



Main goal of our activities

- The project aims setting up of a **basic model of sustainable forest management** based on the currently collected data on the state of forest ecosystems reflected in the forest management plan and regional forest management plan (in 3 levels: ecological, economical and social values)
- The frame of the project should be set up for a simple forest management plan, which should be based on the **categories of forests**, provide a general overview of the possibilities of using wood for the local communities with regard to the current state of forests.

Main goal of our activities

- Training local foresters and residents
- Introducing a system of sustainable forest management
- Appropriate equipment and saving techniques for the using and processing of wood
- Suggest a suitable access roads
- Decrease depopulation



rope
systems
for
logging



Mobile bandsaw

The emphasis is on the multifunctional use of forests

We support....

- Promote the development of tourism in the region
- Solve problems of forest protection - **with a respect to the natural conditions - the crucial role**
- Respect the balance between the three pillars of SD
- Based on the description of forest stands' conditions we suggest:
 - The possibility for using of the wood
 - Proposed transport and logging technologies while respecting harvesting limits (with respect of nature conservation)



Primarily to help local people
and landscape

Thank you for your attention...

